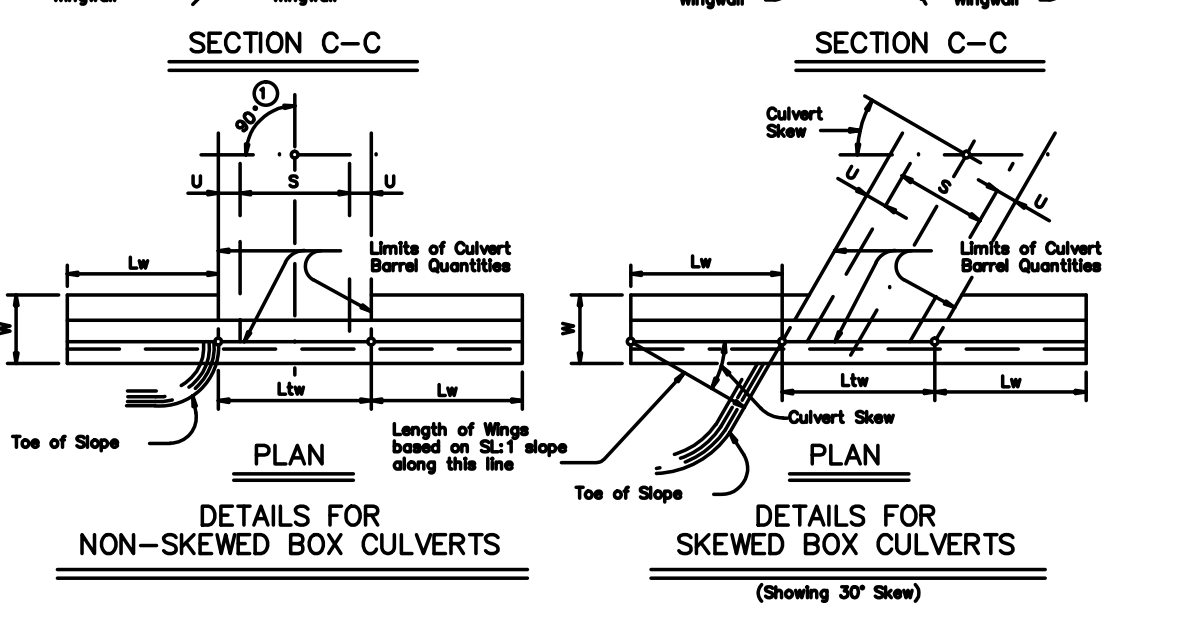
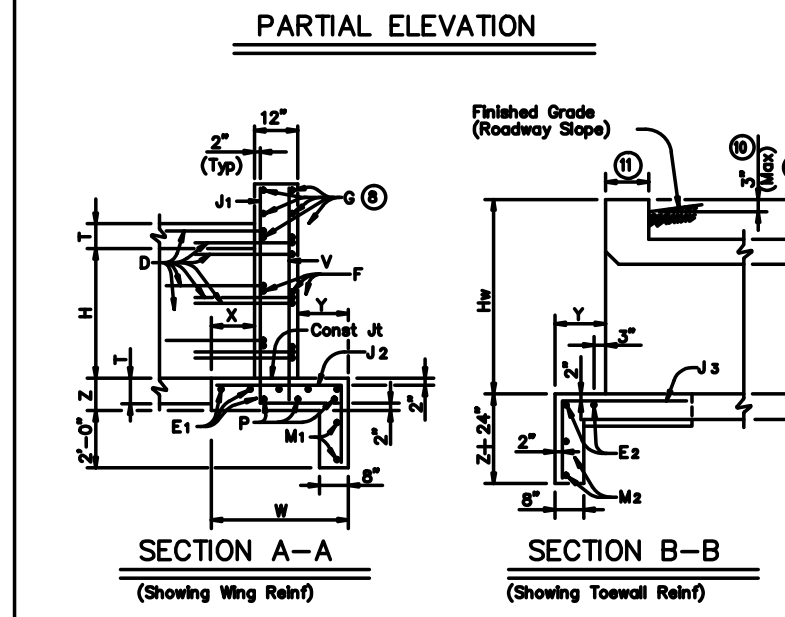
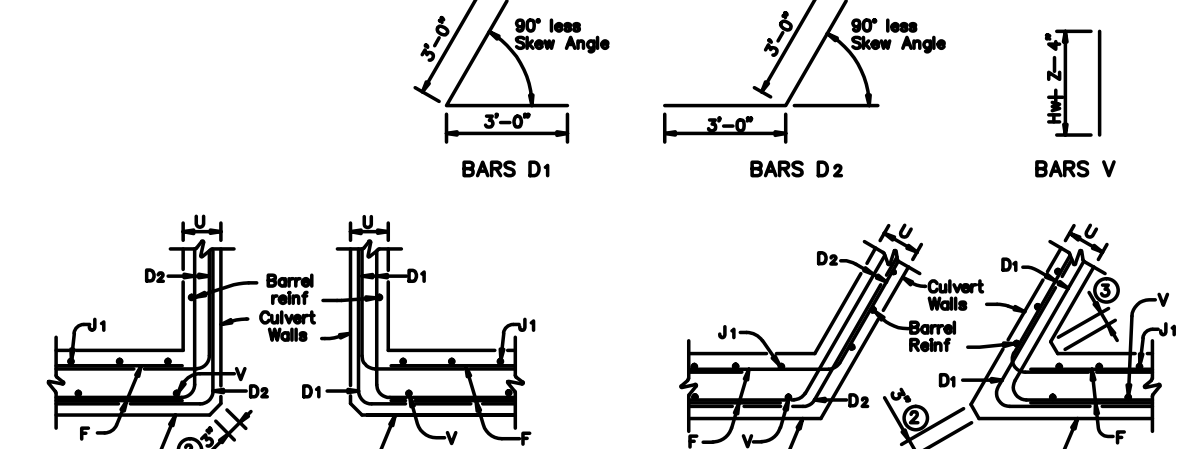
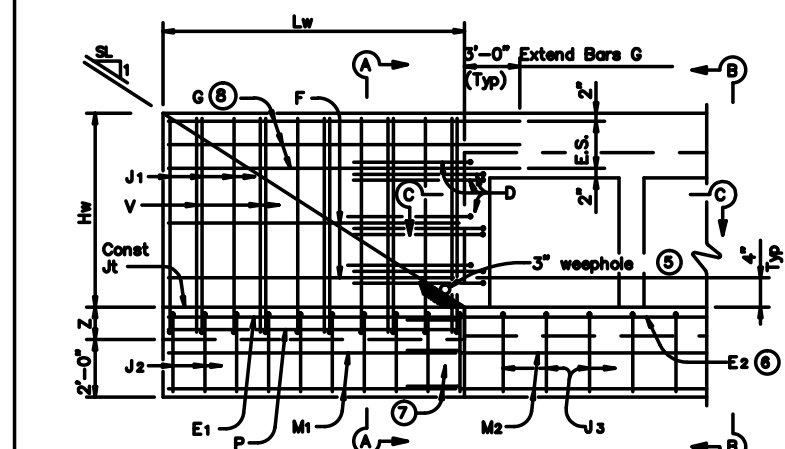


TABLE OF DIMENSIONS & REINFORCING STEEL (Wings for One Structure End)

TABLE OF REINFORCING TOEWALL

WING DIMENSION CALCULATIONS: Formulae (All values are in Feet)

- 1) Slew Angle = 0
2) At discharge end, chamfer may be 3/4".
3) For 15' Slew = 1"
4) For 30' Slew = 2"
5) For 45' Slew = 3"

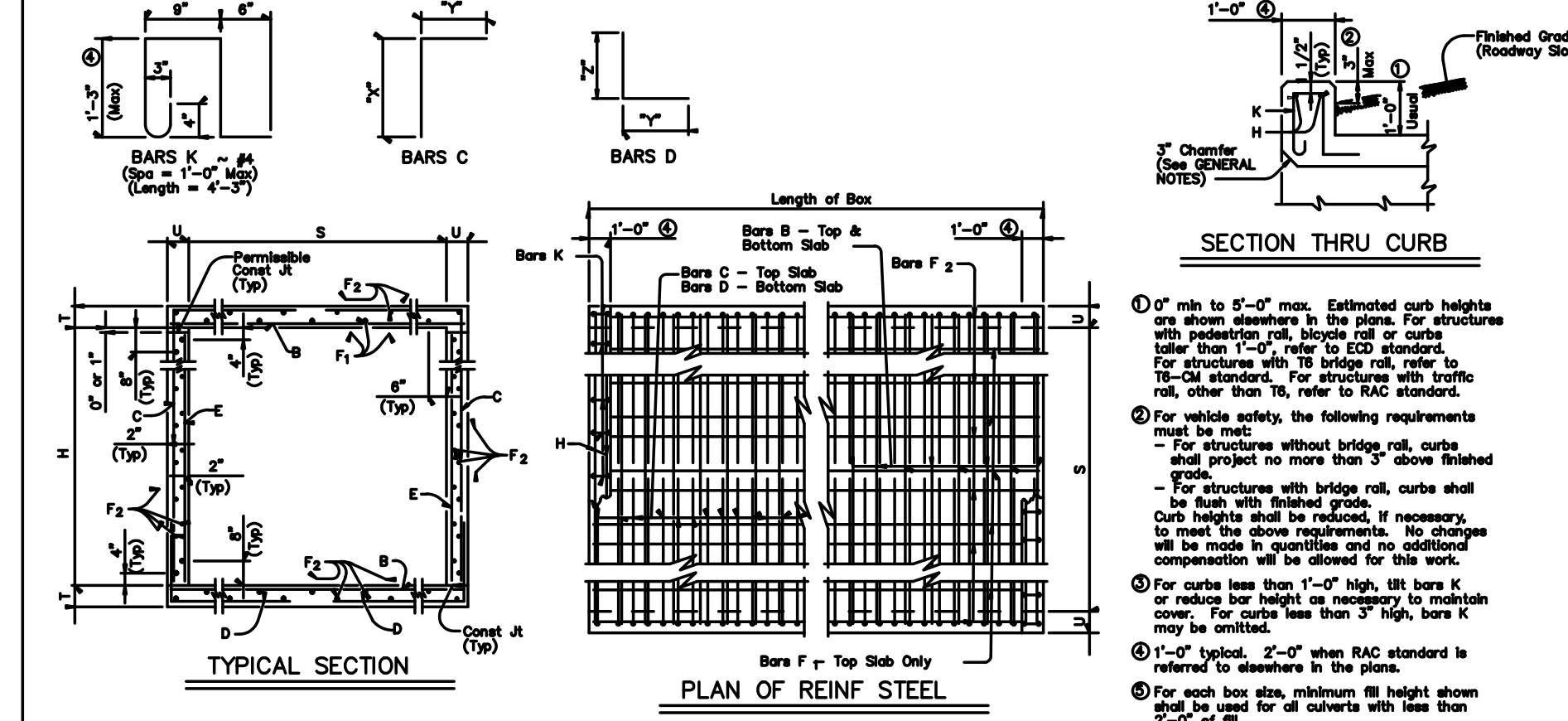


GENERAL NOTES: Designed according to AASHTO LRFD Specifications. All reinforcing steel shall be Grade 60.

TEXAS Department of Transportation CONCRETE WINGWALLS WITH PARALLEL WINGS FOR SKEWED AND NON-SKEWED BOX CULVERTS

Revision table with columns for No., Date, and Description.

BILLS OF REINFORCING STEEL (For Box Length = 40 feet) - Top section table with columns for SECTION DIMENSIONS, BARS B, C, D, E, F, G, H, K, and QUANTITIES.

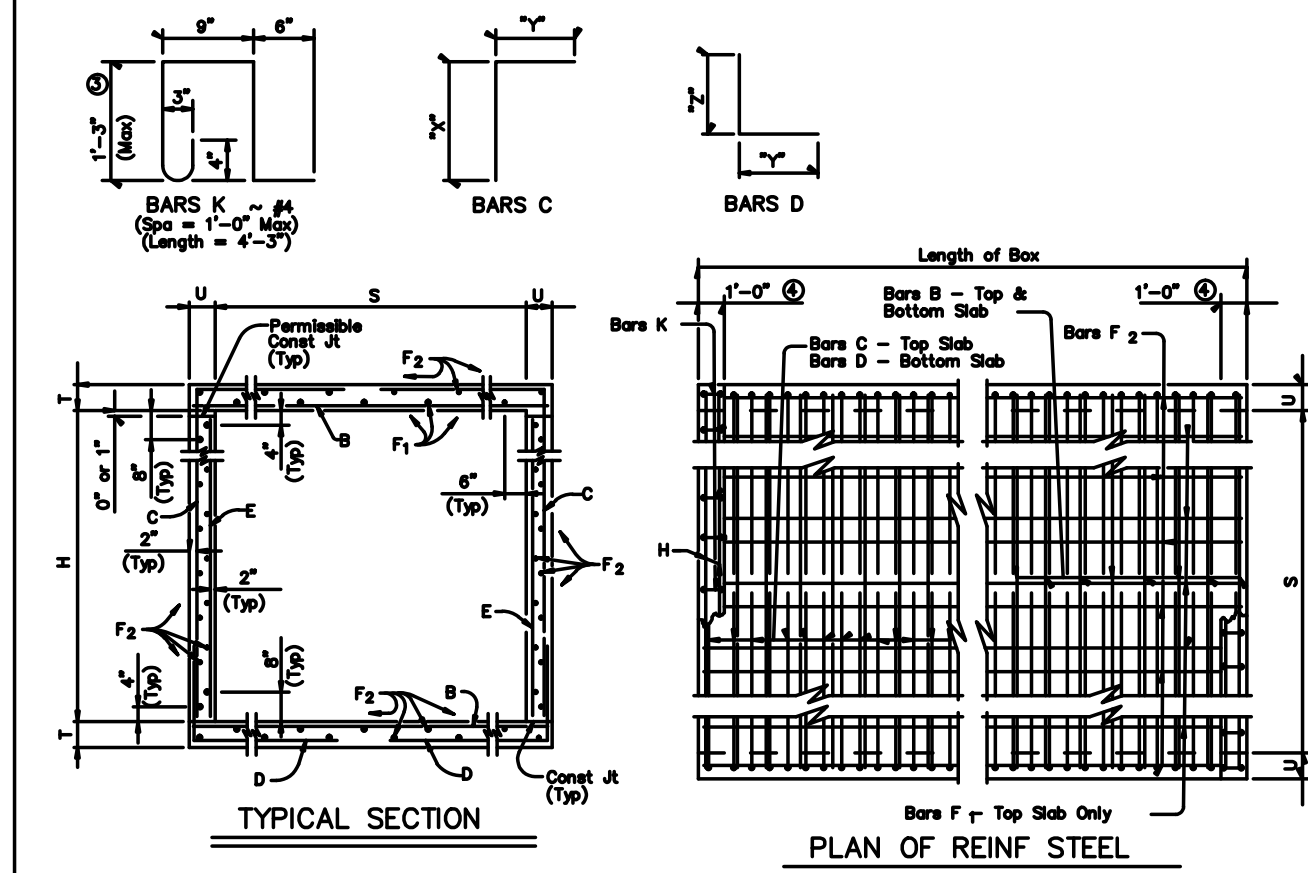


GENERAL NOTES: Designed according to AASHTO LRFD Specifications. All reinforcing steel shall be Grade 60.

TEXAS Department of Transportation CONCRETE WINGWALLS WITH PARALLEL WINGS FOR SKEWED AND NON-SKEWED BOX CULVERTS

Revision table with columns for No., Date, and Description.

BILLS OF REINFORCING STEEL (For Box Length = 40 feet) - Middle section table with columns for SECTION DIMENSIONS, BARS B, C, D, E, F, G, H, K, and QUANTITIES.



GENERAL NOTES: Designed according to AASHTO LRFD Specifications. All reinforcing steel shall be Grade 60.

TEXAS Department of Transportation SINGLE BOX CULVERTS CAST-IN-PLACE 0' TO 30' FILL

Revision table with columns for No., Date, and Description.

Project information including CLIENT (MULLATECH), DRAWN BY (C.R.K.), DESIGNER (C.R.K.), REVIEWER (C.A.W.), B.R.D. PROJECT (035007), SHEET (C-507), and PRELIMINARY status.